



# MONTHLY STATISTICS

3322001

MAY 2021



ROYALTY



238M  
IMPORT / EXPORT DUTY



3.2  
IMPORTS (INCLUDING FUEL)

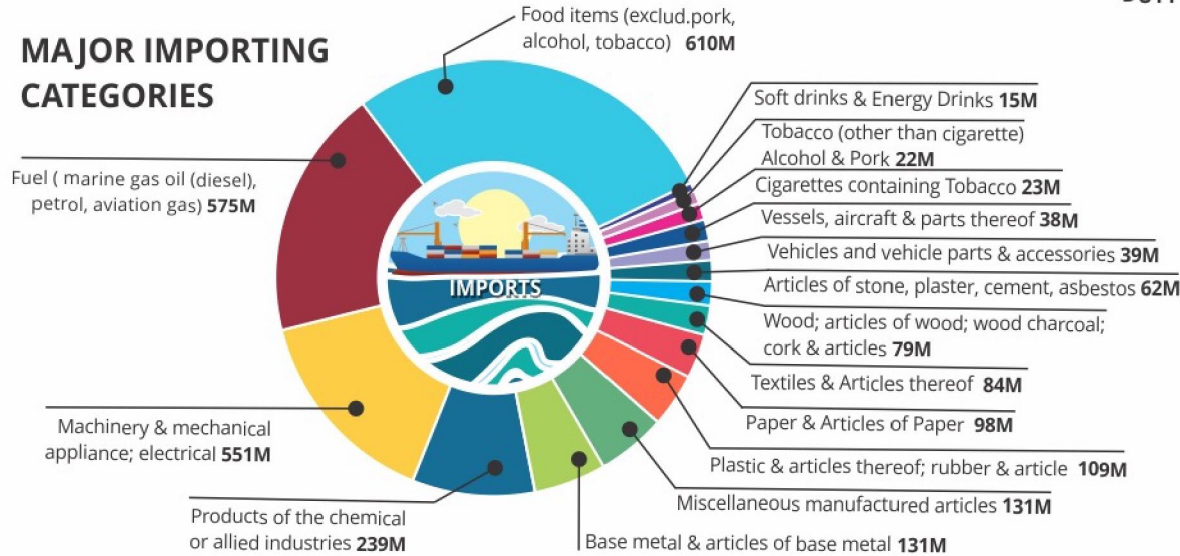


2.5B  
IMPORTS (EXCLUDING FUEL)

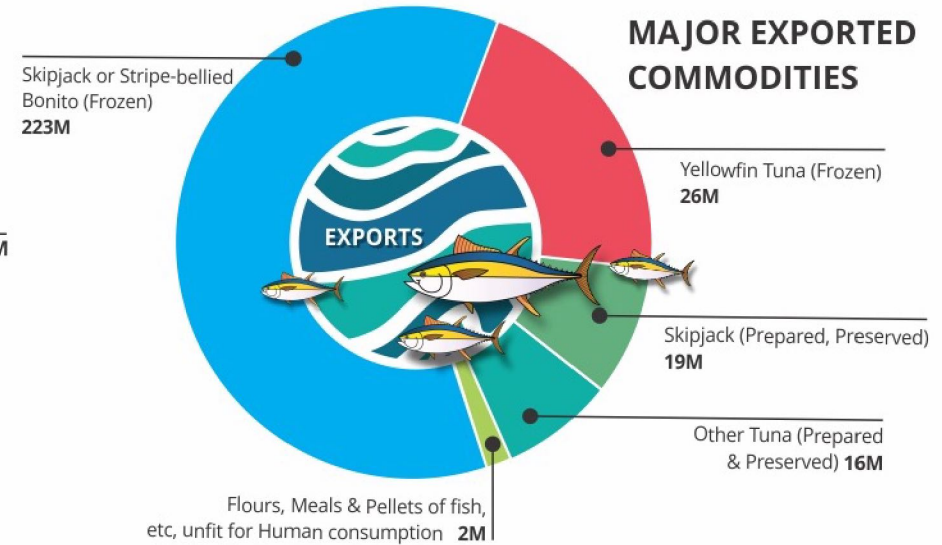


333M  
EXPORT

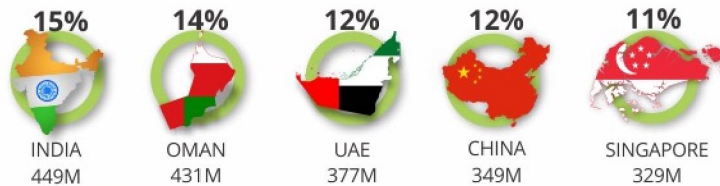
## MAJOR IMPORTING CATEGORIES



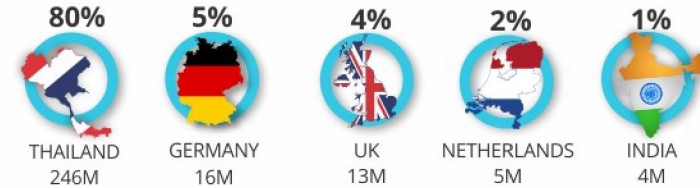
## MAJOR EXPORTED COMMODITIES



### MAJOR IMPORTING COUNTRIES



### MAJOR EXPORTING COUNTRIES



## Vessel Movements (May)

	2020	2021
Vessels Arrived	40	101
Vessels Departed	56	118



## Total Number of Declarations Processed (May)

	2020	2021
Total Number of Declarations Processed	4,685	14,689

