



MONTHLY STATISTICS

3322001

JUNE 2020



211M
IMPORT / EXPORT DUTY



2.1B
IMPORTS (INCLUDING FUEL)

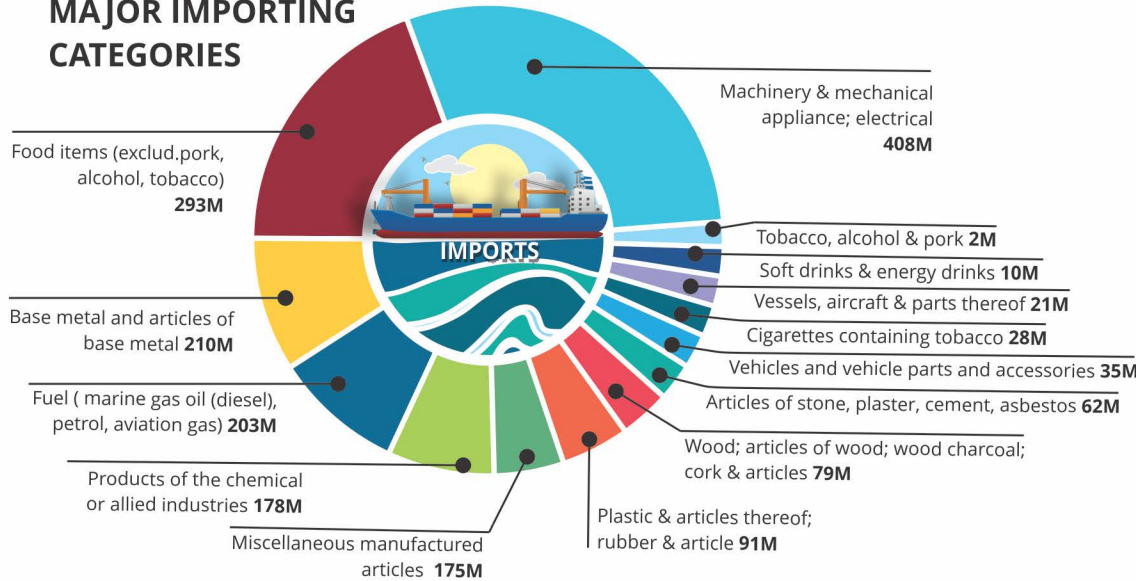


1.9B
IMPORTS (EXCLUDING FUEL)

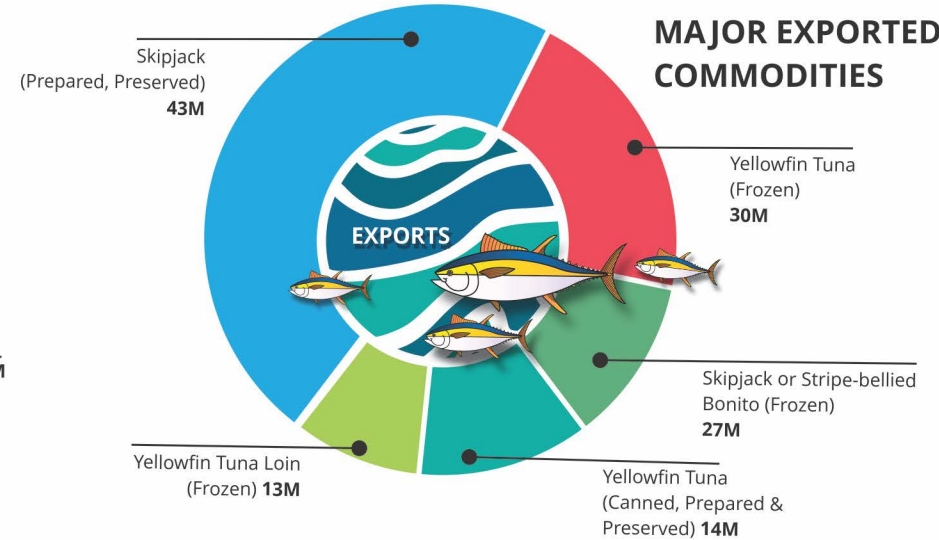


217M
EXPORT

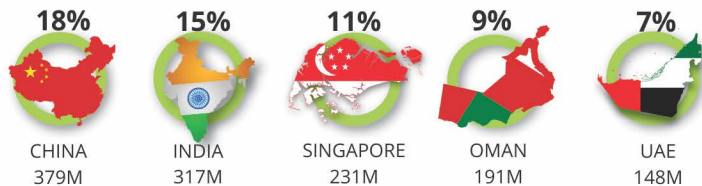
MAJOR IMPORTING CATEGORIES



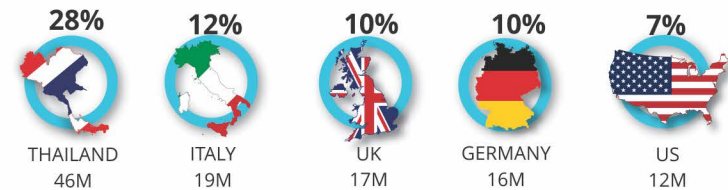
MAJOR EXPORTED COMMODITIES



MAJOR IMPORTING COUNTRIES



MAJOR EXPORTING COUNTRIES



Vessel Movements

	2019	2020
Vessels Arrived	79	64
Vessels Departed	92	74



Total Number of Declarations Processed

Year	Number of Declarations
2019	16,864
2020	6,593

