



MONTHLY STATISTICS

3322001

JANUARY 2021



240M
IMPORT / EXPORT
DUTY



2.9B
IMPORTS
(INCLUDING FUEL)

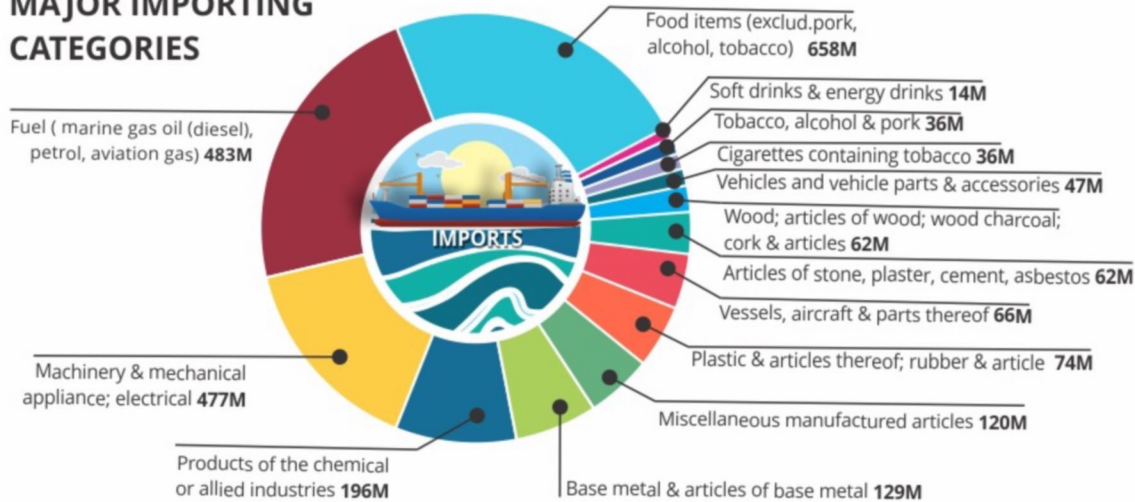


2.3B
IMPORTS
(EXCLUDING FUEL)

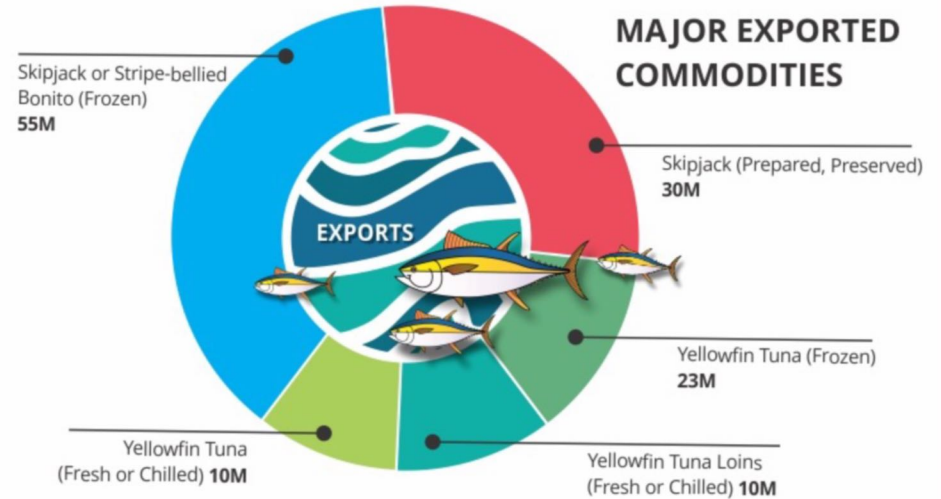


316M
EXPORT

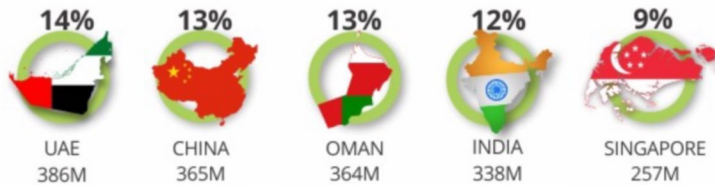
MAJOR IMPORTING CATEGORIES



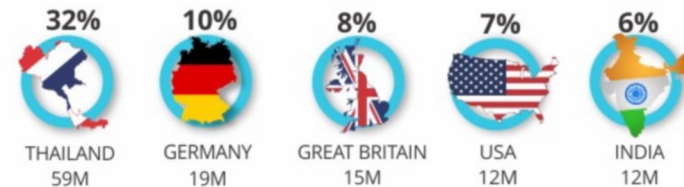
MAJOR EXPORTED COMMODITIES



MAJOR IMPORTING COUNTRIES



MAJOR EXPORTING COUNTRIES



Vessel Movements (January)

	2020	2021
Vessels Arrived	83	130
Vessels Departed	90	130



Total Number of Declarations Processed

(January)	2020	2021
	20,831	16,197

